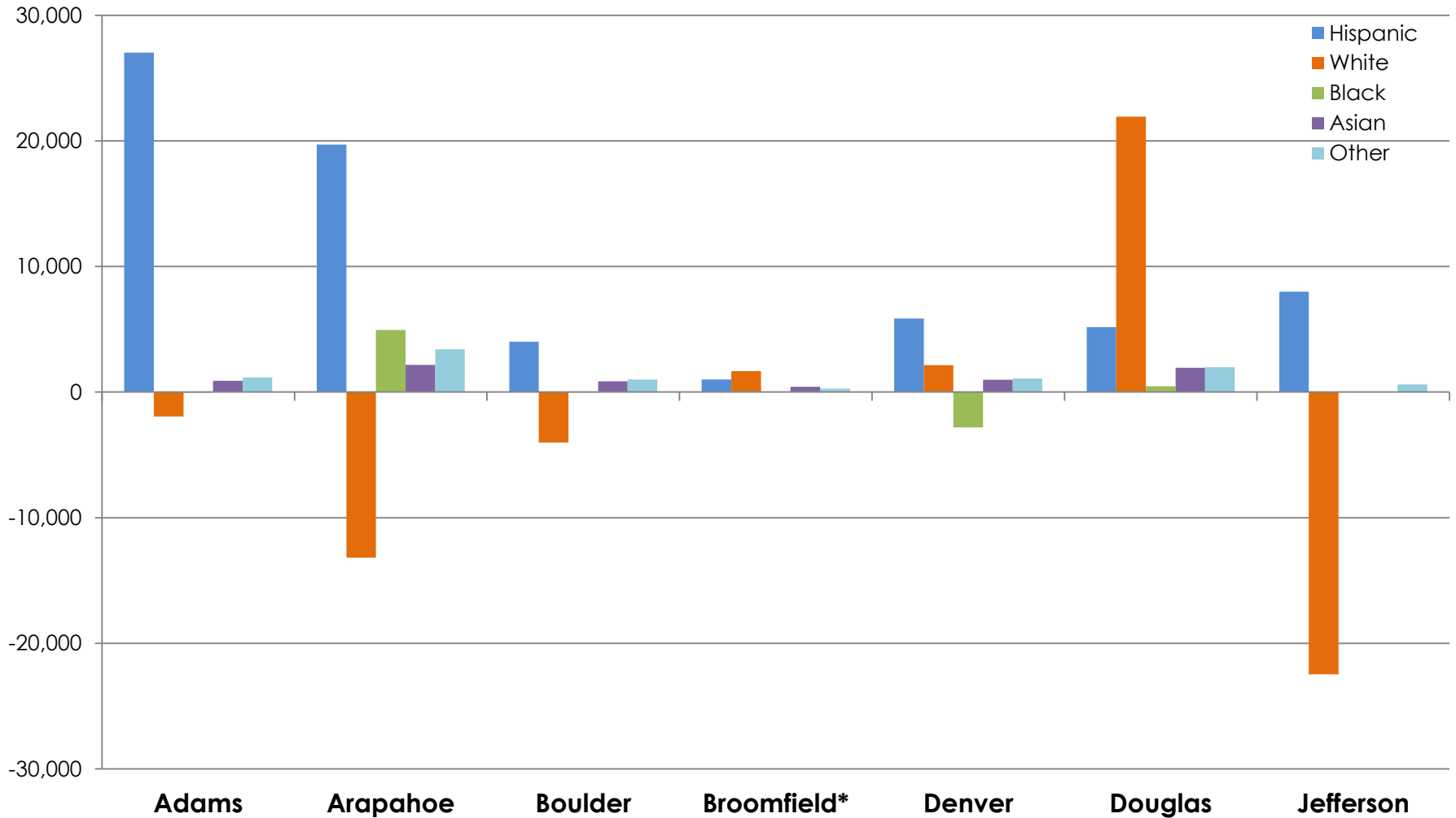


## Youth (Under 18) Population Change by Race/Ethnicity, 2000 to 2010



This graph shows the under 18 population change, by race/ethnic group, for the seven counties in the metro area from 2000 to 2010. Jefferson County saw its youth population decrease by nearly 14,000 (down 11.7% from 2000), while all other counties had growing youth populations. The metro area added 70,785 Hispanic youths, accounting for 95% of the net youth growth. In five counties (Adams, Arapahoe, Boulder, Denver, Jefferson) the fastest-growing racial or ethnic group among youths were Hispanics. Of those counties, all but Denver also saw a decrease in their white youth populations. Metro-wide, the white youth population decreased by nearly 16,000. Arapahoe County showed the largest black population growth, adding nearly 5,000 black youths.

Data source: U.S. Census Bureau. \*Broomfield was not a county in 2000. The 2000 data for Broomfield is composed from parts of Adams, Boulder, Jefferson and Weld Counties.